

The Course Colors

WVU eCampus

Customizing your eCampus Course

The Course Colors

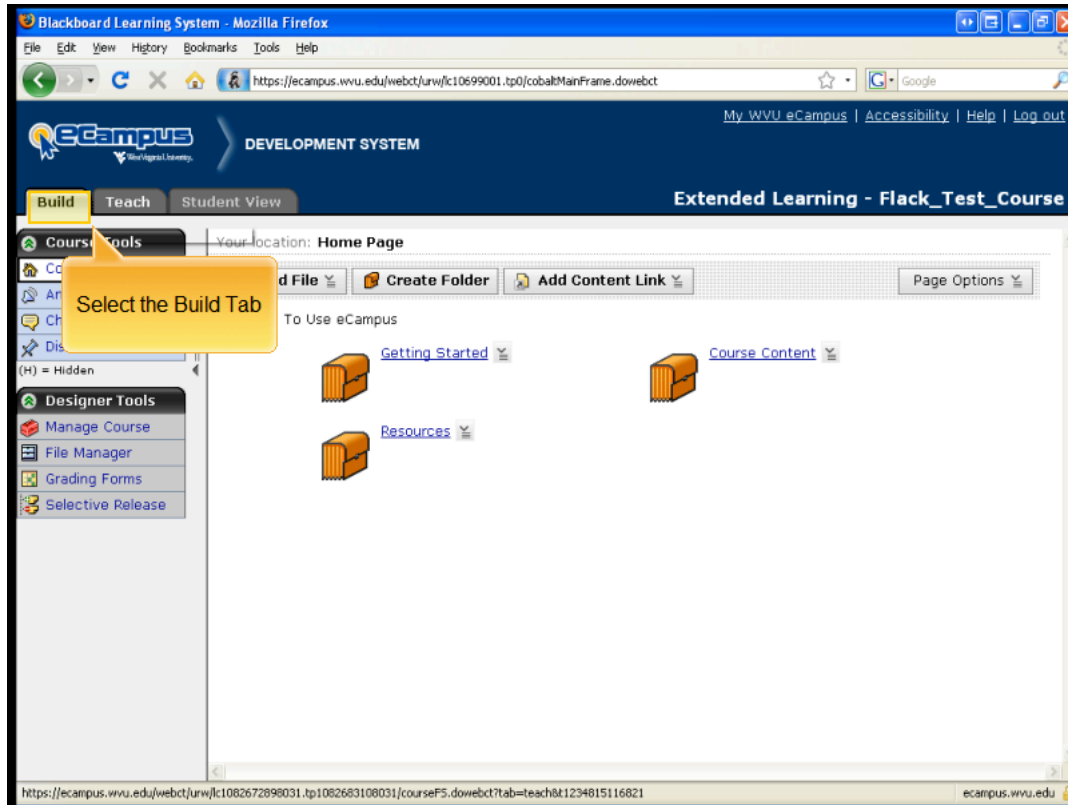
To go to the next slide, click on the **Next** button in the bottom right corner or the Forward

Questions? Contact Instructional Technology Resource Center (ITRC) at 304-293-5824 or itrc@mail.wvu.edu

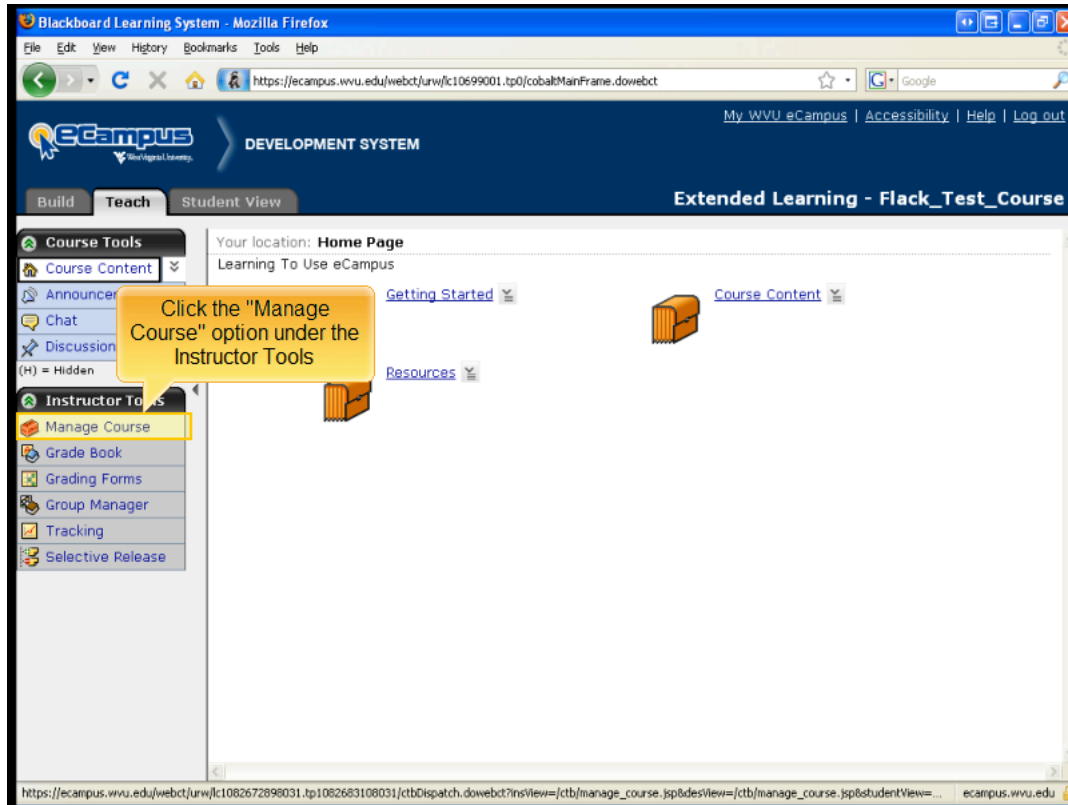
Next ↗

Questions?

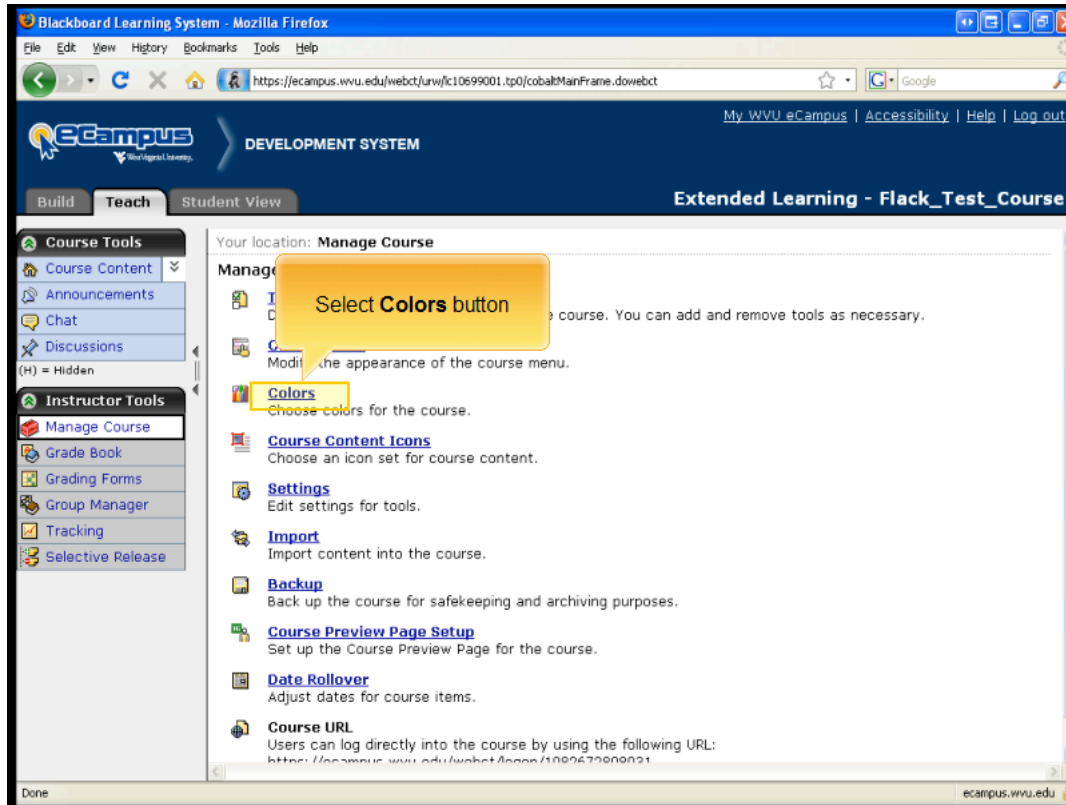
Contact Instructional Technology Resource Center (ITRC) at 304-293-5824 or itrc@mail.wvu.edu



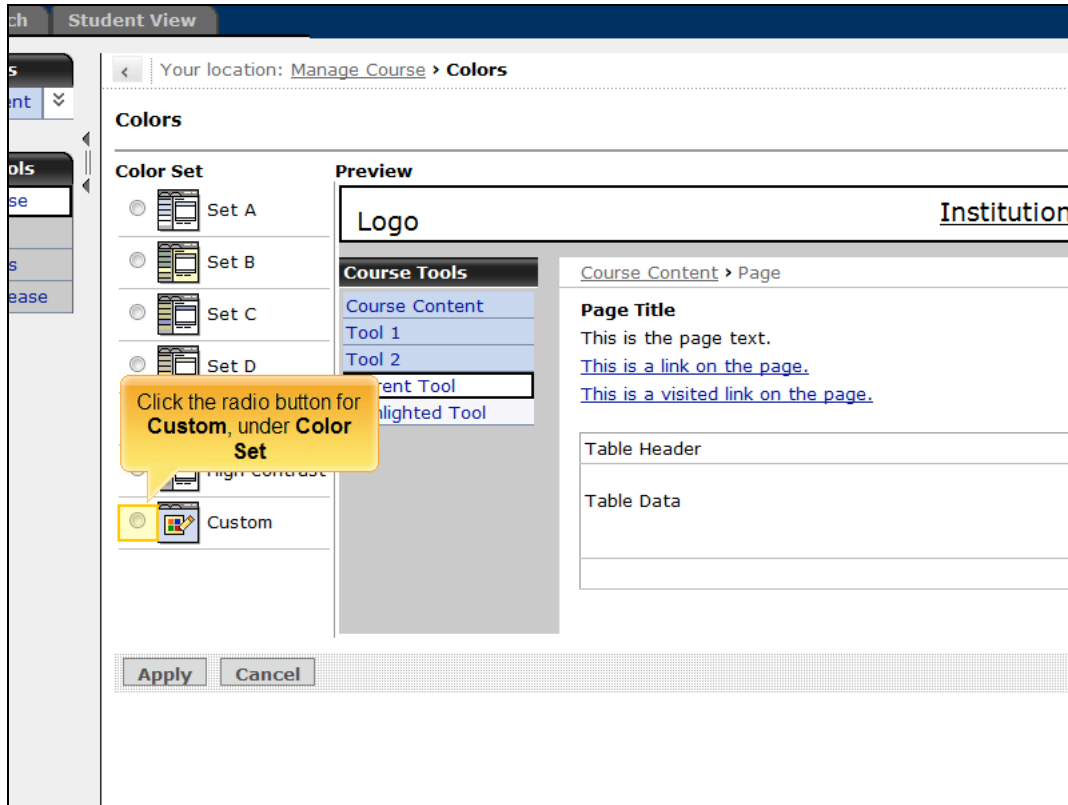
Select the Build Tab



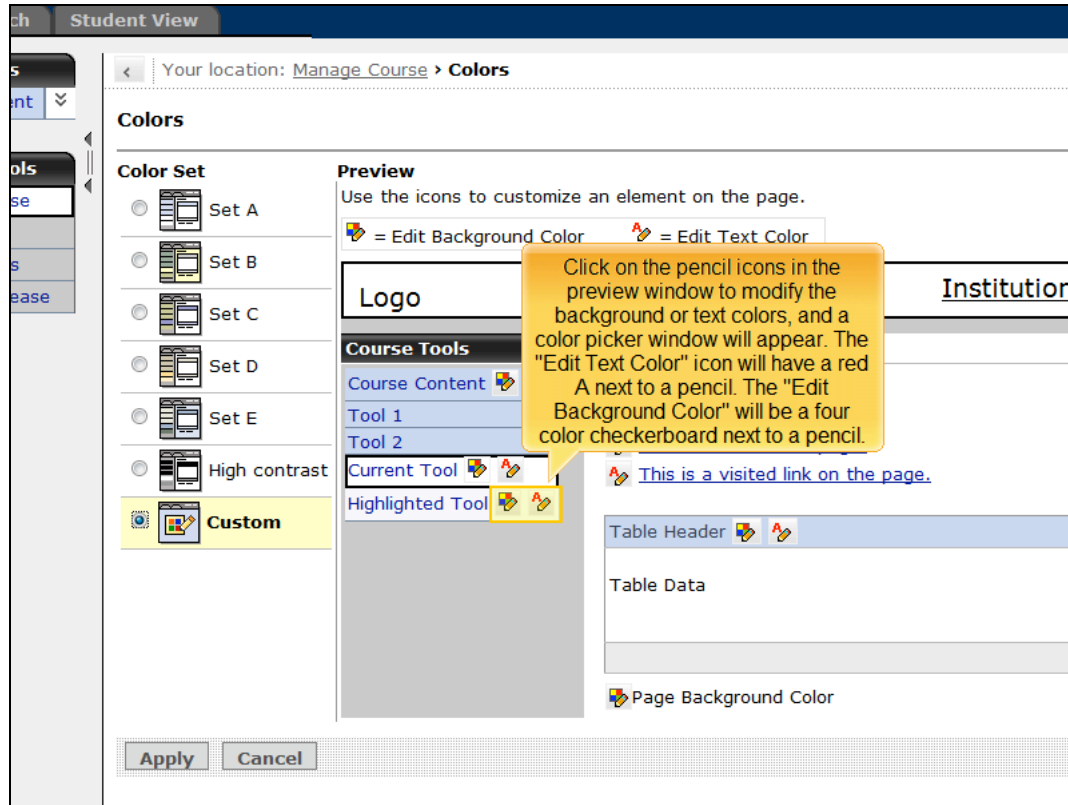
Click the "Manage Course" option under the Instructor Tools



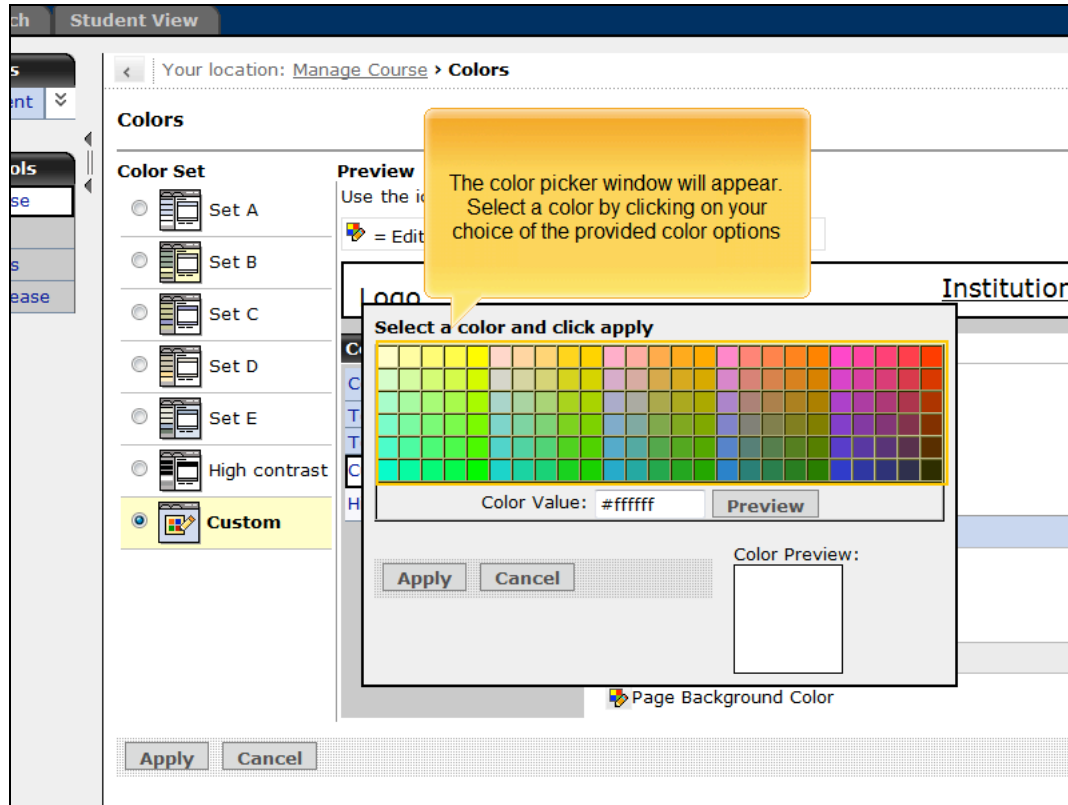
Select Colors button



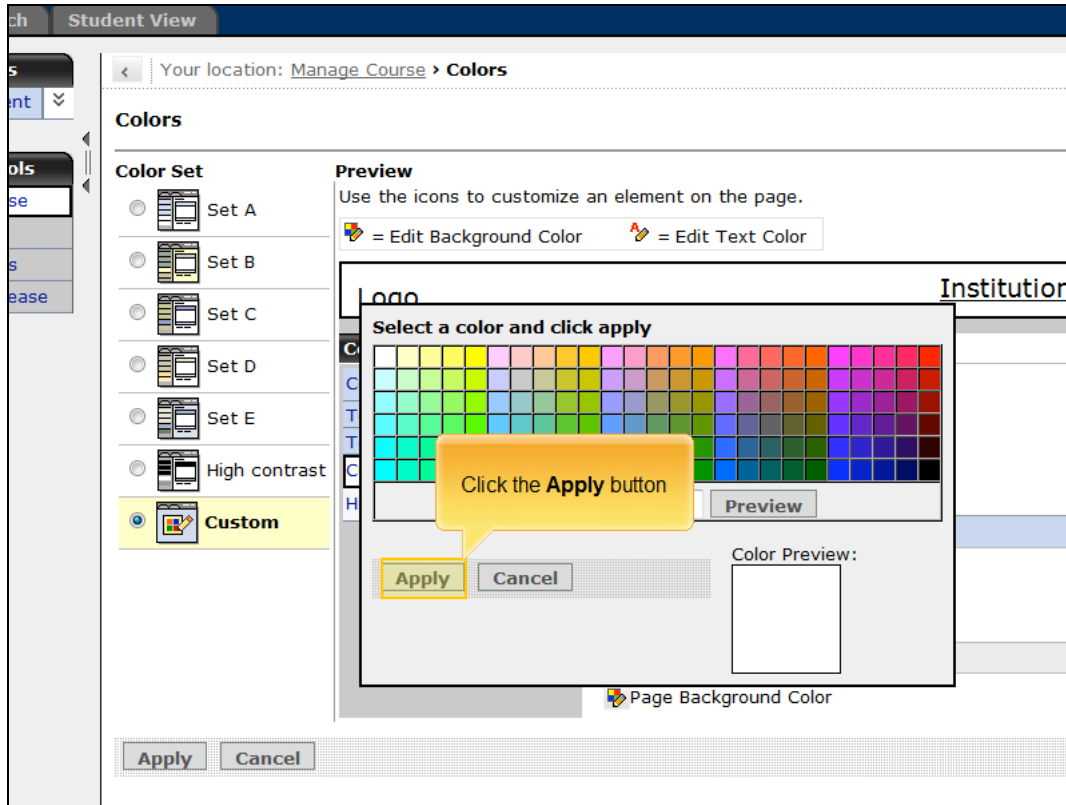
Click the radio button for Custom, under Color Set



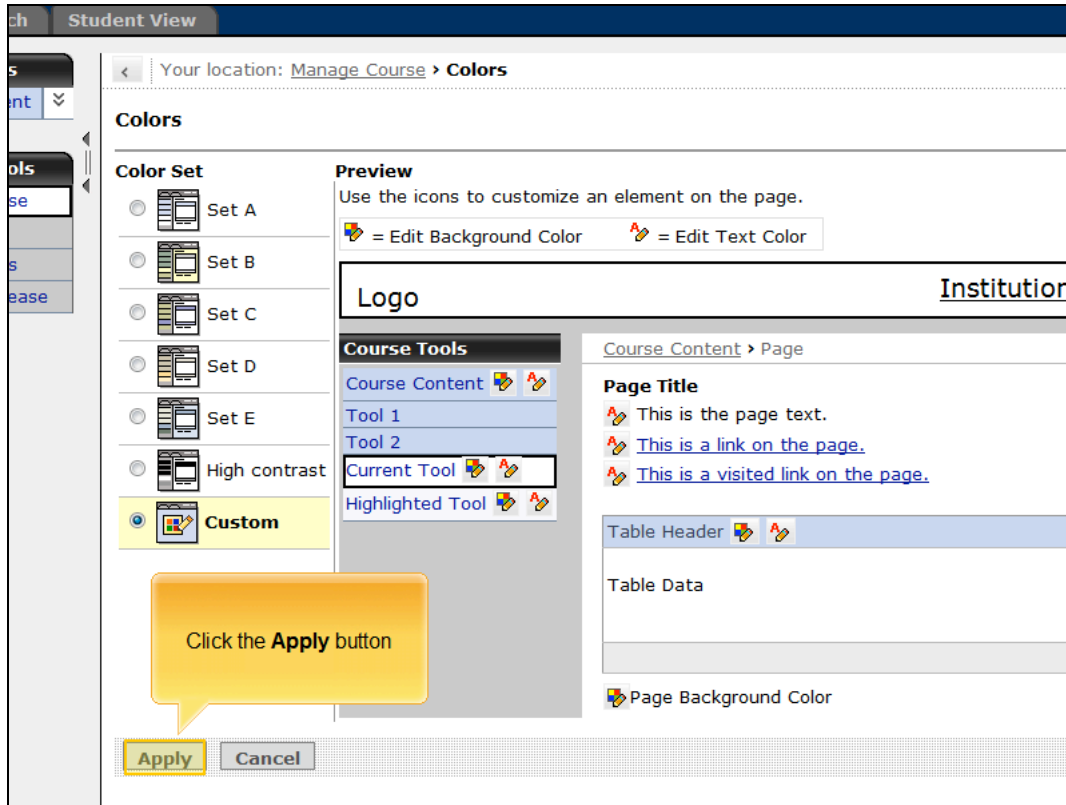
Click on the pencil icons in the preview window to modify the background or text colors, and a color picker window will appear. The "Edit Text Color" icon will have a red A next to a pencil. The "Edit Background Color" will be a four-color checkerboard next to a pencil.



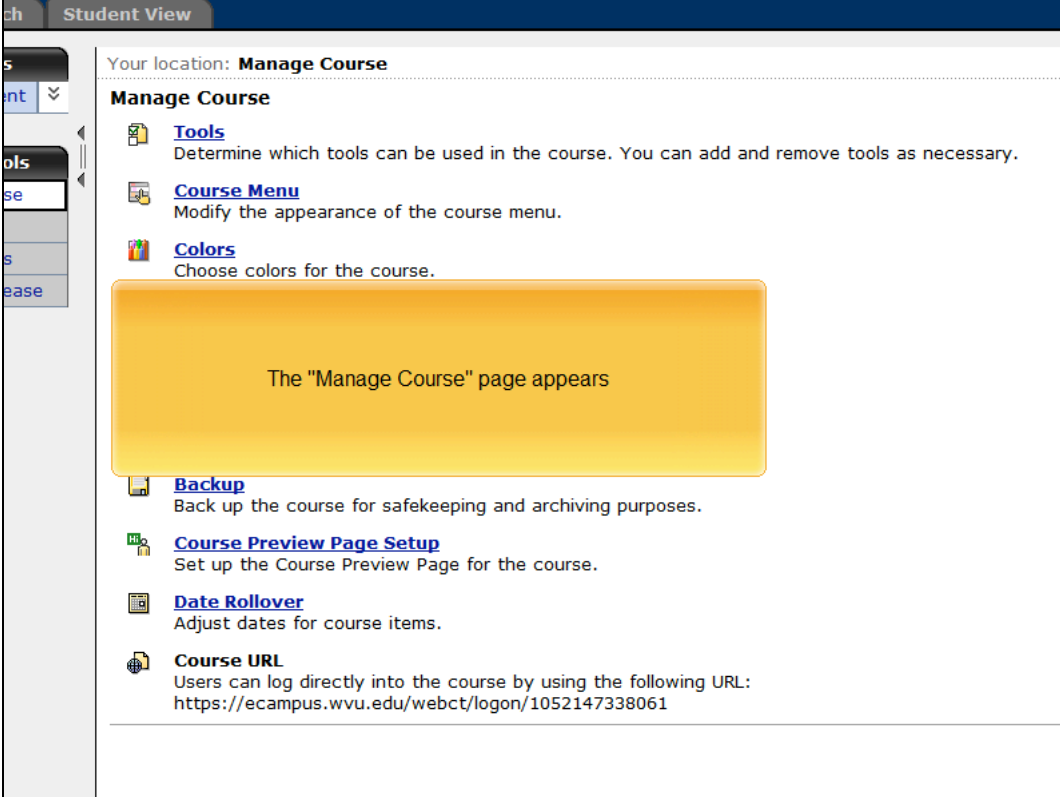
The color picker window will appear. Select a color by clicking on your choice of the provided color options



Click the Apply button










Click the Apply button



ch Student View

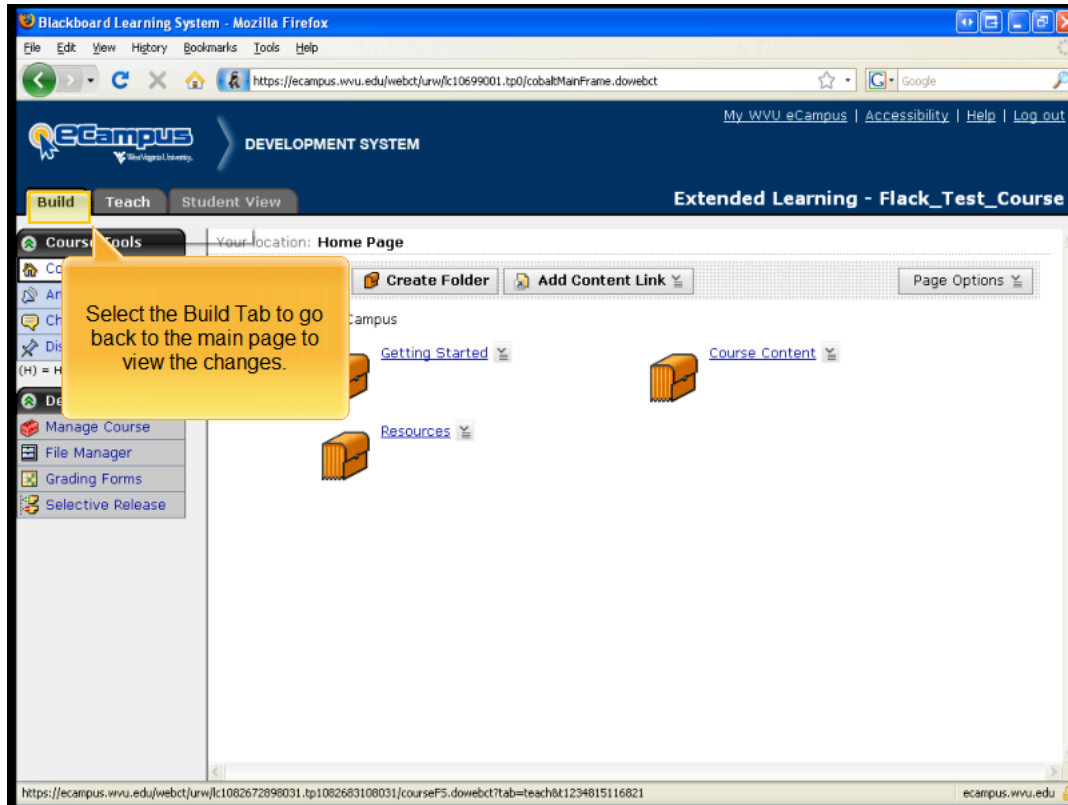
Your location: **Manage Course**

Manage Course

-  **Tools**
Determine which tools can be used in the course. You can add and remove tools as necessary.
-  **Course Menu**
Modify the appearance of the course menu.
-  **Colors**
Choose colors for the course.
-  **Backup**
Back up the course for safekeeping and archiving purposes.
-  **Course Preview Page Setup**
Set up the Course Preview Page for the course.
-  **Date Rollover**
Adjust dates for course items.
-  **Course URL**
Users can log directly into the course by using the following URL:
<https://ecampus.wvu.edu/webct/logon/1052147338061>

The "Manage Course" page appears

The "Manage Course" page appears



Select the Build Tab to go back to the main page to view the changes.

Questions? Contact Instructional Technology Resource Center (ITRC) at 304-293-5824 or itrc@mail.wvu.edu